

DETAILED TURN BY TURN DIRECTIONS

Driving Directions From Pecos:

- 1) From intersection of Cedar St. and I-20 drive north on Hwy. 285 19 miles.
- 2) Turn right onto Hwy 302 drive east 5.2 miles to CR300.
- 3) Turn left onto CR300 drive 0.8 miles to CR 407 turn right.
- 4) Turn right onto CR 407 drive 10.7 miles, turn left and drive 0.3 miles to location entrance on the left.

Driving Directions From Kermit:

- 1) From intersection of Hwy 302 and Hwy 115 in Kermit, drive west 30 miles to CR 300 in Mentone.
- 2) Turn right onto CR300 drive 0.8 miles to CR 407 turn right.
- 3) Turn right onto CR 407 drive 10.7 miles, turn left and drive 0.3 miles to location entrance on the left.

EMERGENCY NUMBERS

ALL EMERGENCY CALLS (Medical, Fire, etc.) - Dial: 911
 OHSI Mentone Clinic: Emergency: 1-844-449-0911
 Non-Emergency: 1-844-361-7277
 Shell Field Medic: Cell: 337-591-7464 Office: 713-493-0263

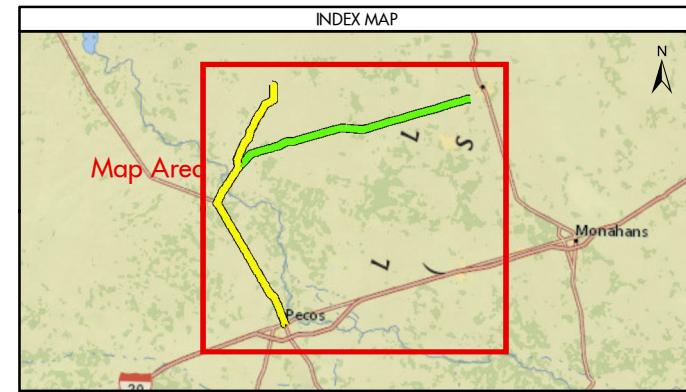
LOVING & WINKLER COUNTY
 Kermit City Police Dept 432-586-2577
 Winkler County Sheriff 432-586-3461
 Loving County Sheriff 432-377-2411
 Winkler/Loving City EMS 432-586-2055
 Winkler County Memorial Hosp 432-586-8299
 Office of Emergency Management 432-586-2035
 AEROCARE (Dispatched by City Police) 877-730-0009
 SHELL Permian Logistics (832) 337 - 3374
<http://us.uacontractor.com/permian/index.php>

SITE DETAILS

Located In: Loving County

Site Latitude & Longitude
 CRS: WGS 84
 FORMAT: Decimal Degrees
 Latitude: 31.852392
 Longitude: -103.536547

**Wells On Pad Site:
 Gaudalupe SWD 53-2-15 1D**



MAP INFORMATION	
—	From Pecos
—	From Kermit
★	Towns
—	Limited Access
—	Highway
—	Major Road
—	Streets
	Counties

NOTES	GEODETIC PARAMETERS
This map has been prepared by Shell from a variety of sources both within Shell and third party information (ESRI, GOM3, and/or IHS). The map may be subject to errors of judgement and/or opinion. Information from third party sources can not be confirmed or guaranteed by Shell. The copyright in this document is vested in Shell 08 Mar 2018. All rights reserved.	Horizontal Coordinate Reference System CRS name (ESRI): WGS 1984 Web Mercator Auxiliary Sphere Geodetic datum: WGS 1984 Projection name: Web Mercator Auxiliary Horizontal units: Feet
Print size: 11"x17" (ANSI B)	
MAP SCALE	

SHELL EXPLORATION AND PRODUCTION COMPANY

UNRESTRICTED

UA Geomatics

APPROVED ROUTE MAP FOR PERMIAN TPLT-53T2-15-SWD1 (FC-4096)

Texas, United States

Author: H. Knight	Date: 08 Mar 2018
Reviewed By: H. Knight	Map Status: In Review
Name: TPLT-53T2-15-SWD1_4096	