

- ### DETAILED TURN BY TURN DIRECTIONS
- Driving Directions From Kermit:
- 1) From intersection of Hwy. 302 and Hwy. 115 drive west 18.5 miles to A-3 Lease Rd. on the left.
 - 2) Turn left onto A-3 Lease Rd. drive 5.8 miles, turn right and continue for 2.6 miles.
 - 3) Veer right, and then left around (Old Ranch Trailer) and continue for 2.3 miles.
 - 4) Turn left and drive 0.1 mile veer left and continue ahead 1.2 miles.
 - 5) Turn right and drive 0.7 miles through existing location, turn left and continue 0.3 miles to location on the right.

- Driving Directions From Pecos:
- 1) From intersection of Cedar St. and I-20 drive north on Hwy. 285 19 miles to Hwy 302.
 - 2) Turn right onto Hwy 302 drive east 19.4 miles to A-3 Lease Rd. on the right.
 - 3) Turn right onto A-3 Lease Rd. drive 5.8 miles, turn right and continue for 2.6 miles.
 - 4) Veer right, and then left around (Old Ranch Trailer) and continue for 2.3 miles.
 - 5) Turn left and drive 0.1 mile veer left and continue ahead 1.2 miles.
 - 6) Turn right and drive 0.7 miles through existing location, turn left and continue 0.3 miles to location on the right.

EMERGENCY NUMBERS

ALL EMERGENCY CALLS (Medical, Fire, etc.) - Dial: 911
 Shell Field Medic Cell: 337-591-7464 Office: 713-821-8299

LOVING & WINKLER COUNTY
 Kermit City Police Dept 432-586-2577
 Winkler County Sheriff 432-586-3461
 Loving County Sheriff 432-377-2411
 Winkler/Loving City EMS 432-586-2055
 Winkler County Memorial Hosp 432-586-8299
 Office of Emergency Management 432-586-2035
 AEROCARE (Dispatched by City Police) 877-730-0009

SHELL Permian Logistics (832) 337 - 3374

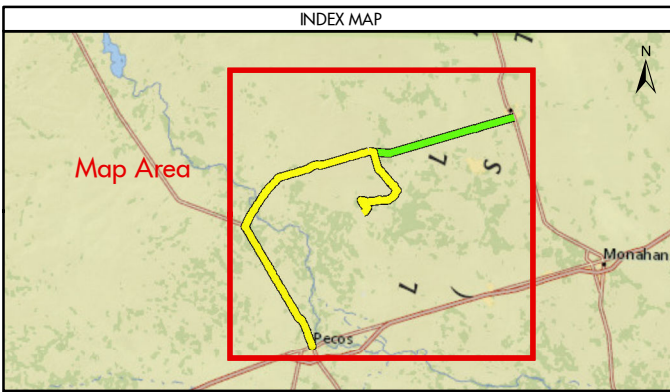
<http://us.uacontractor.com/permian/index.php>

SITE DETAILS

Located In: Loving County

Site Latitude & Longitude
 CRS: WGS 84
 FORMAT: Decimal Degrees
 Latitude: 31.668572
 Longitude: -103.398272

**Wells On Pad Site:
 Neches 19-23-1D**



- ### MAP INFORMATION
- From Pecos
 - From Kermit
 - ★ Towns
 - Limited Access
 - Highway
 - Major Road
 - Streets
 - Counties

NOTES

This map has been prepared by Shell from a variety of sources both within Shell and third party information (ESRI, GOM3, and/or IHS). The map may be subject to errors of judgement and/or opinion. Information from third party sources can not be confirmed or guaranteed by Shell. The copyright in this document is vested in Shell 08 Mar 2018. All rights reserved.

Print size: 11"x17" (ANSI B)

GEODETIC PARAMETERS

Horizontal Coordinate Reference System
 CRS name (ESRI): WGS 1984 Web Mercator Auxiliary Sphere

Geodetic datum: WGS 1984
 Projection name: Web Mercator Auxiliary
 Horizontal units: Feet

MAP SCALE

SHELL EXPLORATION AND PRODUCTION COMPANY

UNRESTRICTED

UA Geomatics

APPROVED ROUTE MAP FOR PERMIAN UL-19-23-SWD1 (FC-4100)

Texas, United States

Author: H. Knight	Date: 08 Mar 2018
Reviewed By: H. Knight	Map Status: In Review
Name: UL-19-23-SWD1_4100	