

DETAILED TURN BY TURN DIRECTIONS

Driving Directions From Kermit:

- 1) From intersection of Hwy. 302 and Hwy. 115 drive west 15.8 miles to Gate A-3 Lease Rd. on the left.
- 2) Turn left onto A-3 Lease Rd. and drive 5.8 miles to Lease Rd. intersection.
- 3) Turn right onto Lease Rd., drive 2.6 miles, continue around (Old Ranch Trailer) right for 0.1 mile.
- 4) Turn left and drive 2.4 miles, turn left again and continue 0.6 miles then turn right and drive 0.9 miles.
- 5) Turn left and drive 2.1 miles, turn left and continue for 0.9 miles.
- 6) Turn left and drive through existing location and continue to the NE Corner of that location.
- 7) Drive 0.3 miles down access road to location.

Driving Directions From Pecos:

- 1) From intersection of Cedar St. and I-20 drive north on Hwy. 285 19 miles.
- 2) Turn right onto Hwy 302 drive east 19.4 miles to Gate A-3 Lease Rd. on the right.
- 3) Turn right onto Gate A-3 Lease Rd. drive 5.8 miles to Lease Rd. intersection.
- 4) Turn right onto Lease Rd., drive 2.6 miles, continue around (Old Ranch Trailer) right for 0.1 mile.
- 5) Turn left and drive 2.4 miles, turn left again and continue 0.6 miles then turn right and drive 0.9 miles.
- 6) Turn left and drive 2.1 miles, turn left and continue for 0.9 miles.
- 7) Turn left and drive through existing location and continue to the NE Corner of that location.
- 8) Drive 0.3 miles down access road to location.

EMERGENCY NUMBERS

Shell Field Medic Cell: 337-591-7464 Office: 713-821-8299

LOVING & WINKLER COUNTY
 Kermit City Police Dept 432-586-2577
 Winkler County Sheriff 432-586-3461
 Loving County Sheriff 432-377-2411
 Winkler/Loving City EMS 432-586-2055
 Winkler County Memorial Hosp 432-586-8299
 Office of Emergency Management 432-586-2035
 AEROCARE (Dispatched by City Police) 877-730-0009

SHELL Permian Logistics (832) 337 - 3374

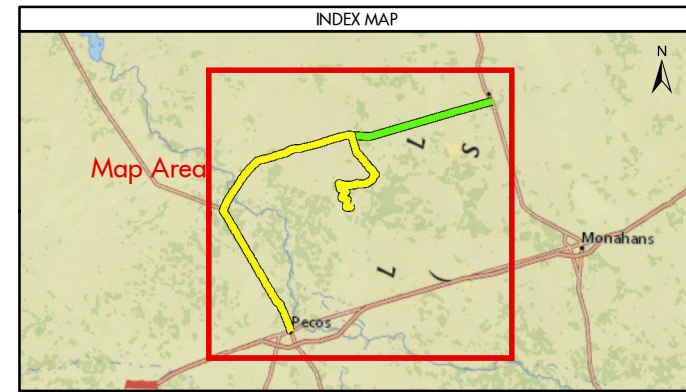
SITE DETAILS

Located In: Loving County

Site Latitude & Longitude
 CRS: WGS 84
 FORMAT: Decimal Degrees
 Latitude: 31.657513
 Longitude: -103.374739

Wells On Pad Site:
University 19 PW Unit 2203H & 4H

<http://us.uacontractor.com/permian/index.php>



MAP INFORMATION	
	From Pecos
	From Kermit
	Limited Access
	Highway
	Major Road
	Streets
	Counties

NOTES	GEODETIC PARAMETERS
<p>This map has been prepared by Shell from a variety of sources both within Shell and third party information (ESRI, GOM3, and/or IHS). The map may be subject to errors of judgement and/or opinion. Information from third party sources can not be confirmed or guaranteed by Shell. The copyright in this document is vested in Shell 03 Apr 2018. All rights reserved.</p> <p>Print size: 11"x17" (ANSI B)</p>	<p>Horizontal Coordinate Reference System CRS name (ESRI): WGS 1984 Web Mercator Auxiliary Sphere</p> <p>Geodetic datum: WGS 1984 Projection name: Web Mercator Auxiliary Horizontal units: Feet</p>
MAP SCALE	

SHELL EXPLORATION AND PRODUCTION COMPANY	
UNRESTRICTED	
<small>UA Geomatics</small>	
APPROVED ROUTE MAP FOR PERMIAN UL-19-25-P1 (FC-4110)	
Texas, United States	
<small>Author: H. Knight</small>	<small>Date: 03 Apr 2018</small>
<small>Reviewed By: H. Knight</small>	<small>Map Status: In Review</small>
<small>Name: UL-19-25-P1_4110</small>	