

**DETAILED TURN BY TURN DIRECTIONS**

Driving Directions From Kermit:

- 1) From intersection of Hwy. 302 and Poplar St. (Hwy. 18) drive west 15.9 miles to A-3 Lease Rd. on the left.
- 2) Turn left onto A-3 Lease Rd. drive 5.4 miles to Lease Rd. intersection on the right.
- 3) Turn right onto Lease Rd. and drive 0.1 mile, veer left around old facility.
- 4) Continue ahead 0.7 miles to location entrance on the left.

Driving Directions From Pecos:

- 1) From intersection of Cedar St. and I-20 drive north on Hwy. 285 19 miles.
- 2) Turn right onto Hwy 302 drive east 19.4 miles to A-3 Lease Rd. on the right.
- 3) Turn right onto A-3 Lease Rd. drive 5.4 miles to Lease Rd. intersection on the right.
- 4) Turn right onto Lease Rd. and drive 0.1 mile, veer left around old facility.
- 5) Continue ahead 0.7 miles to location entrance on the left.

**EMERGENCY NUMBERS**

ALL EMERGENCY CALLS (Medical, Fire, etc.) - Dial: 911  
 Shell Field Medic Cell: 337-591-7464 Office: 713-493-0263

LOVING & WINKLER COUNTY  
 Kermit City Police Dept 432-586-2577  
 Winkler County Sheriff 432-586-3461  
 Loving County Sheriff 432-377-2411  
 Winkler/Loving City EMS 432-586-2055  
 Winkler County Memorial Hosp 432-586-8299  
 Office of Emergency Management 432-586-2035  
 AEROCARE (Dispatched by City Police) 877-730-0009

SHELL Permian Logistics (832) 337 - 3374

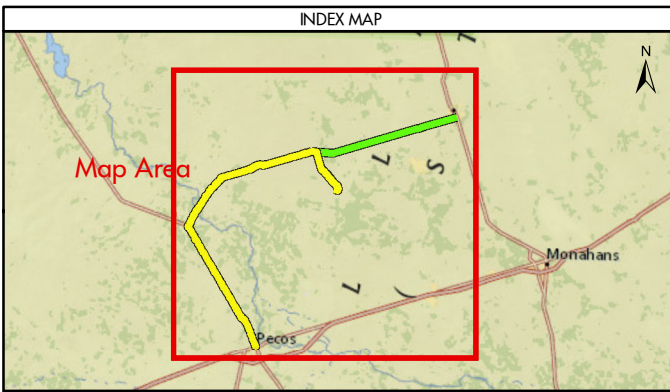
<http://us.uacontractor.com/permian/index.php>

**SITE DETAILS**

Located In: Winkler County

Site Latitude & Longitude  
 CRS: WGS 84  
 FORMAT: Decimal Degrees  
 Latitude: 31.71145  
 Longitude: -103.340951

**Wells On Pad Site:**  
**UL-20-17-SWDF1**



**MAP INFORMATION**

- From Pecos
- From Kermit
- ★ Towns
- Limited Access
- Highway
- Major Road
- Streets
- Counties

**NOTES**

This map has been prepared by Shell from a variety of sources both within Shell and third party information (ESRI, GOM3, and/or IHS). The map may be subject to errors of judgement and/or opinion. Information from third party sources can not be confirmed or guaranteed by Shell. The copyright in this document is vested in Shell 24 Oct 2017. All rights reserved.

Print size: 11"x17" (ANSI B)

**MAP SCALE**

0 4.25 8.5 17  
Miles

**GEODETIC PARAMETERS**

Horizontal Coordinate Reference System  
 CRS name (ESRI): WGS 1984 Web Mercator Auxiliary Sphere

Geodetic datum: WGS 1984  
 Projection name: Web Mercator Auxiliary  
 Horizontal units: Feet

**SHELL EXPLORATION AND PRODUCTION COMPANY**

**UNRESTRICTED**

UA Geomatics

**APPROVED ROUTE MAP FOR PERMIAN ARMADILLO SWD FACILITY (FC-4067)**

**Texas, United States**

Author: H. Knight	Date: 24 Oct 2017
Reviewed By: H. Knight	Map Status: In Review
Name: Armadillo_SWD_Facility_4067	