

DETAILED TURN BY TURN DIRECTIONS

Driving Directions From Pyote:

- 1) From intersection of Hwy. 115 and Hwy. 2355 (3rd St.) go west on Hwy. 2355 1 mile and turn left onto Ranch Rd.
- 2) Drive 2.9 miles to entrance location on the left.
- 3) Turn left and drive 0.5 miles to location site.

EMERGENCY NUMBERS

ALL EMERGENCY CALLS (Medical, Fire, etc.) - Dial: 911
 Shell Field Medic Cell: 337-591-7464 Office: 713-493-0263

WARD & REEVES COUNTY
 Monahan's City Police Dept 432-943-3254
 Ward County Sheriff Dept 432-943-6703
 Monahan's Fire Dept 432-943-2211
 Sheriff's Office 432-943-6703
 Ward County Memorial Hospital 432-943-2511
 Pecos City Police 432-445-4911
 Reeves County Sheriff's Dept 432-445-4901
 Volunteer Fire Dept (Dispatched by City Police)
 Pecos Hospital 432-447-3551
 Office of Emergency Management 432-445-5418

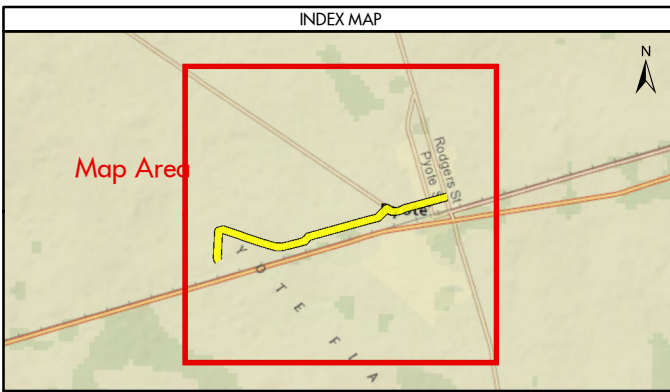
SITE DETAILS

Located In: Ward County

 Site Latitude & Longitude
 CRS: WGS 84
 FORMAT: Decimal Degrees
 Latitude: 31.518795
 Longitude: -103.182907

 Alias(s) Or Other Common Names:

 HSSE Team Lead: Charles Travis 318-332-6023
 HSSE Admin: Idalia Villegas 432-202-8018



MAP INFORMATION

- ERP Shell Routes
- Limited Access
- Highway
- Major Road
- Streets
- Counties

NOTES

This map has been prepared by Shell from a variety of sources both within Shell and third party information (ESRI, GOM3, and/or IHS). The map may be subject to errors of judgement and/or opinion. Information from third party sources can not be confirmed or guaranteed by Shell. The copyright in this document is vested in Shell 27 Aug 2014. All rights reserved.

Print size: 11"x17" (ANSI B)

MAP SCALE

GEODETIC PARAMETERS

Horizontal Coordinate Reference System
 CRS name (ESRI): WGS 1984 Web Mercator Auxiliary Sphere

 Geodetic datum: WGS 1984
 Projection name: Web Mercator Auxiliary
 Horizontal units: Feet

SHELL EXPLORATION AND PRODUCTION COMPANY

UNRESTRICTED

UA Geomatics

APPROVED ROUTE MAP FOR PERMIAN AVERY 121 1H

Texas, United States

Author: B. Solomon	Date: 27 Aug 2014
Reviewed By: B. Solomon	Map Status: In Review
Name: Avery_121_1H	