

**DETAILED TURN BY TURN DIRECTIONS**

Driving Directions From Kermit:

- 1) From intersection of Hwy. 302 and Hwy. 115 drive west 15.8 miles.
- 2) Turn left at A3 Lease Rd. and continue 5.7 miles.
- 3) Turn right at intersection and drive 2.6 miles, veer right and left around (Old Ranch Trailer).
- 4) Continue 1.2 miles then turn left drive 0.1 miles to location site on the right.

Driving Directions From Pecos:

- 1) From intersection of Cedar St. and I-20 drive north on Hwy. 285 19 miles.
- 2) Turn right onto Hwy 302 drive east 19.4 miles
- 3) Turn right at A3 Lease Rd. and continue 5.7 miles.
- 4) Turn right at intersection and drive 2.6 miles, veer right and left around (Old Ranch Trailer).
- 5) Continue 1.2 miles then turn left drive 0.1 miles to location site on the right.

**EMERGENCY NUMBERS**

ALL EMERGENCY CALLS (Medical, Fire, etc.) - Dial: 911  
 Shell Field Medic Cell: 337-591-7464 Office: 713-493-0263

LOVING & WINKLER COUNTY  
 Kermit City Police Dept 432-586-2577  
 Winkler County Sheriff 432-586-3461  
 Loving County Sheriff 432-377-2411  
 Winkler/Loving City EMS 432-586-2055  
 Winkler County Memorial Hosp 432-586-8299  
 Office of Emergency Management 432-586-2035  
 AEROCARE (Dispatched by City Police) 877-730-0009

SHELL Permian Logistics (832) 337 - 3374

<http://us.uacontractor.com/permian/index.php>

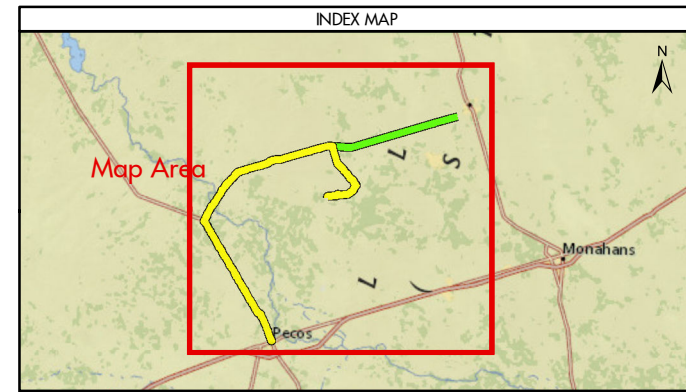
**SITE DETAILS**

Located In: Loving County

Site Latitude & Longitude  
 CRS: WGS 84  
 FORMAT: Decimal Degrees  
 Latitude: 31.70085  
 Longitude: -103.36808

Alias(s) Or Other Common Names:

**Wells On Pad Site:**  
**UL-19-19-CPF1**



- From Pecos
- From Kermit
- ★ Towns
- Limited Access
- Highway
- Major Road
- Streets
- Counties

MAP INFORMATION

NOTES

This map has been prepared by Shell from a variety of sources both within Shell and third party information (ESRI, GOM3, and/or IHS). The map may be subject to errors of judgement and/or opinion. Information from third party sources can not be confirmed or guaranteed by Shell. The copyright in this document is vested in Shell 11 Oct 2017. All rights reserved.

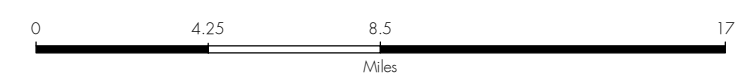
Print size: 11"x17" (ANSI B)

GEODETIC PARAMETERS

Horizontal Coordinate Reference System  
 CRS name (ESRI): WGS 1984 Web Mercator Auxiliary Sphere

Geodetic datum: WGS 1984  
 Projection name: Web Mercator Auxiliary  
 Horizontal units: Feet

MAP SCALE



<b>SHELL EXPLORATION AND PRODUCTION COMPANY</b>	
<b>UNRESTRICTED</b>	
UA Geomatics	
<b>APPROVED ROUTE MAP FOR PERMIAN COLT 19-19 CPF (FC-4060)</b>	
<b>Texas, United States</b>	
Author: H. Knight	Date: 11 Oct 2017
Reviewed By: H. Knight	Map Status: In Review
Name: Colt_19-19_CPF_4060	