

DETAILED TURN BY TURN DIRECTIONS

Driving Directions From Pecos:

- 1) From intersection of Cedar St. and I-20 drive north on Hwy. 285 19 miles.
- 2) Turn right onto Hwy 302 drive east 5.4 miles to CR300.
- 3) Turn left onto CR300 drive 6.3 miles to Reeves CR 440 on the left.
- 4) Turn left onto Reeves CR 440 drive 2 miles, turn left.
- 5) Drive 0.9 miles to the Lindley 54-2-44 LOV 1H location.
- 6) Turn right at Lindley location, go around pad drive 2.2 miles, entrance location will be on the left.

Driving Directions From Kermit:

- 1) From intersection of Hwy 302 and Hwy 115 in Kermit, drive west 30 miles to CR 300 in Mentone.
- 2) Turn right onto CR300 drive 6.3 miles to Reeves CR 440 on the left.
- 3) Turn left onto Reeves CR 440 drive 2 miles, turn left.
- 4) Drive 0.9 miles to the Lindley 54-2-44 LOV 1H location.
- 5) Turn right at Lindley location, go around pad drive 2.2 miles, entrance location will be on the left.

EMERGENCY NUMBERS

ALL EMERGENCY CALLS (Medical, Fire, etc.) - Dial: 911
 Shell Field Medic Cell: 337-591-7464 Office: 713-821-8299

LOVING & WINKLER COUNTY
 Kermit City Police Dept 432-586-2577
 Winkler County Sheriff 432-586-3461
 Loving County Sheriff 432-377-2411
 Winkler/Loving City EMS 432-586-2055
 Winkler County Memorial Hosp 432-586-8299
 Office of Emergency Management 432-586-2035
 AEROCARE (Dispatched by City Police) 877-730-0009

<http://us.uacontractor.com/permian/index.php>

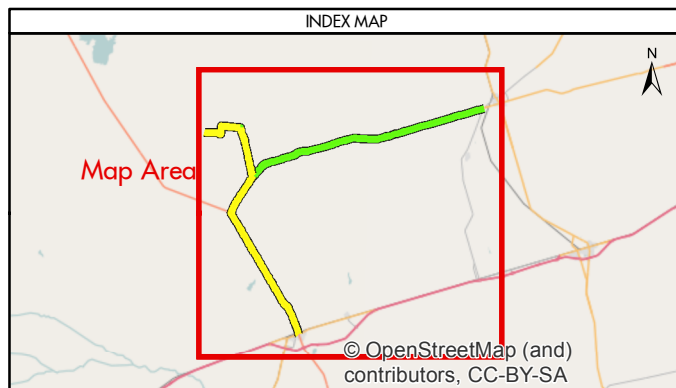
SITE DETAILS

Located In: Loving County

Site Latitude & Longitude
 CRS: WGS 84
 FORMAT: Decimal Degrees
 Latitude: 31.780517
 Longitude: -103.706292

Alias(s) Or Other Common Names:

SHELL Contact Person
 Dustin Fontenot - (337) 580 - 3930



MAP INFORMATION	
	From Pecos
	From Kermit
	Towns
	Limited Access
	Highway
	Major Road
	Streets
	Counties

NOTES	GEODETIC PARAMETERS
This map has been prepared by Shell from a variety of sources both within Shell and third party information (ESRI, GOM3, and/or IHS). The map may be subject to errors of judgement and/or opinion. Information from third party sources can not be confirmed or guaranteed by Shell. The copyright in this document is vested in Shell 17 Mar 2016. All rights reserved.	Horizontal Coordinate Reference System CRS name (ESRI): WGS 1984 Web Mercator Auxiliary Sphere Geodetic datum: WGS 1984 Projection name: Web Mercator Auxiliary Horizontal units: Feet
Print size: 11"x17" (ANSI B)	
MAP SCALE	

SHELL EXPLORATION AND PRODUCTION COMPANY	
UNRESTRICTED	
UA Geomatics	
APPROVED ROUTE MAP FOR PERMIAN HUESO SALT STATE 55-2-48 LOV 2H (FC-2020)	
Texas, United States	
Author: H. Knight	Date: 17 Mar 2016
Reviewed By: H. Knight	Map Status: In Review
Name: HuesoSaltSt_55-2-48LOV_2H_2020	