

**DETAILED TURN BY TURN DIRECTIONS**

Driving Directions From Kermit:

- 1) From intersection of Hwy. 302 and Hwy. 115 drive west 15.8 miles to A-3 Lease Rd. on the left.
- 2) Turn left onto A-3 Lease Rd. drive 5.8 miles, turn right and continue for 2.6 miles.
- 3) Veer right, and then left around (Old Ranch Trailer) and continue for 2.3 miles.
- 4) Turn left and drive 0.6 miles then turn right, continue ahead 0.9 miles, turn left and drive 0.7 miles.
- 5) Turn left and continue 0.7 miles to location access road on the right.

Driving Directions From Pecos:

- 1) From intersection of Cedar St. and I-20 drive north on Hwy. 285 19.4 miles to Hwy 302.
- 2) Turn right onto Hwy 302 drive east 19.4 miles to A-3 Lease Rd. on the right.
- 3) Turn right onto A-3 Lease Rd. drive 5.8 miles, turn right and continue for 2.6 miles.
- 4) Veer right, and then left around (Old Ranch Trailer) and continue for 2.3 miles.
- 5) Turn left and drive 0.6 miles then turn right, continue ahead 0.9 miles, turn left and drive 0.7 miles.
- 6) Turn left and continue 0.7 miles to location access road on the right.

**EMERGENCY NUMBERS**

ALL EMERGENCY CALLS (Medical, Fire, etc.) - Dial: 911  
 Shell Field Medic Cell: 337-591-7464 Office: 713-821-8299

LOVING & WINKLER COUNTY  
 Kermit City Police Dept 432-586-2577  
 Winkler County Sheriff 432-586-3461  
 Loving County Sheriff 432-377-2411  
 Winkler/Loving City EMS 432-586-2055  
 Winkler County Memorial Hosp 432-586-8299  
 Office of Emergency Management 432-586-2035  
 AEROCARE (Dispatched by City Police) 877-730-0009

SHELL Permian Logistics (832) 337 - 3374

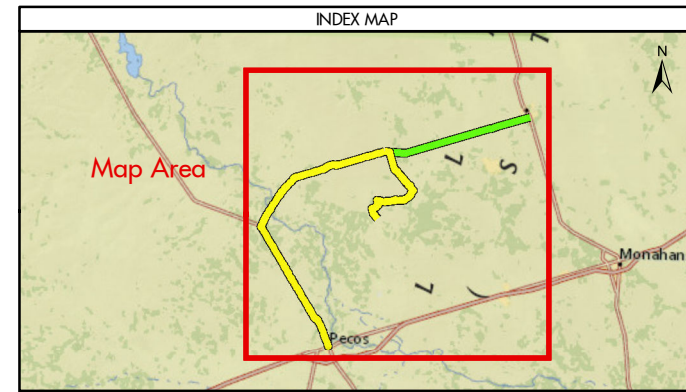
<http://us.uacontractor.com/permian/index.php>

**SITE DETAILS**

Located In: Loving County

Site Latitude & Longitude  
 CRS: WGS 84  
 FORMAT: Decimal Degrees  
 Latitude: 31.659659  
 Longitude: -103.394811

**Wells On Pad Site:**  
**UL-19-23-SWDF3**



MAP INFORMATION	
	From Pecos
	From Kermit
	Towns
	Limited Access
	Highway
	Major Road
	Streets
	Counties

NOTES	GEODETIC PARAMETERS
This map has been prepared by Shell from a variety of sources both within Shell and third party information (ESRI, GOM3, and/or IHS). The map may be subject to errors of judgement and/or opinion. Information from third party sources can not be confirmed or guaranteed by Shell. The copyright in this document is vested in Shell 11 Oct 2017. All rights reserved.	Horizontal Coordinate Reference System CRS name (ESRI): WGS 1984 Web Mercator Auxiliary Sphere  Geodetic datum: WGS 1984 Projection name: Web Mercator Auxiliary Horizontal units: Feet
Print size: 11"x17" (ANSI B)	
MAP SCALE	

<b>SHELL EXPLORATION AND PRODUCTION COMPANY</b>	
<b>UNRESTRICTED</b>	
UA Geomatics	
<b>APPROVED ROUTE MAP FOR PERMIAN ROAD RUNNER SWD FACILITY (FC-4061)</b>	
<b>Texas, United States</b>	
Author: H. Knight	Date: 11 Oct 2017
Reviewed By: H. Knight	Map Status: In Review
Name: RoadRunner_SWD_Facility_4061	