

DETAILED TURN BY TURN DIRECTIONS

Driving Directions From Pecos:

- 1) From intersection of Cedar St. and I-20 drive north on Hwy. 285 19 miles.
- 2) Turn right onto Hwy 302 drive east 5.4 miles to CR300.
- 3) Turn left onto CR300 drive 6.3 miles to Lindley Ranch Rd..
- 4) Turn left at Lindley Ranch Rd. drive West 1.6 miles to entrance location on the left.
- 5) Turn left into entrance and drive 1 mile to location site on the left.

Driving Directions From Kermit:

- 1) From intersection of Hwy 302 and Hwy 115 in Kermit, drive west 30 miles to CR 300 in Mentone.
- 2) Turn right onto CR300 drive 6.3 miles to Lindley Ranch Rd..
- 3) Turn left at Lindley Ranch Rd. drive West 1.6 miles to entrance location on the left.
- 4) Turn left into entrance and drive 1 mile to location site on the left.

EMERGENCY NUMBERS

ALL EMERGENCY CALLS (Medical, Fire, etc.) - Dial: 911
 Shell Field Medic Cell: 337-591-7464 Office: 713-493-0263

LOVING & WINKLER COUNTY
 Kermit City Police Dept 432-586-2577
 Winkler County Sheriff 432-586-3461
 Loving County Sheriff 432-377-2411
 Winkler/Loving City EMS 432-586-2055
 Winkler County Memorial Hosp 432-586-8299
 Office of Emergency Management 432-586-2035
 AEROCARE (Dispatched by City Police) 877-730-0009

SHELL Permian Logistics - (832) 337 - 3374

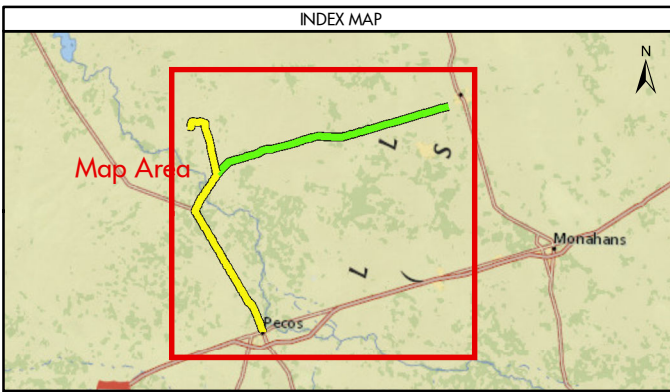
<http://us.uacontractor.com/permian/index.php>

SITE DETAILS

Located In: Loving County

Site Latitude & Longitude
 CRS: WGS 84
 FORMAT: Decimal Degrees
 Latitude: 31.789151
 Longitude: -103.664846

Sea Dragon SWD 911 Address
 1947 Pipeline Rd.
 Mentone, TX 79754



- From Pecos
- From Kermit
- ★ Towns
- Limited Access
- Highway
- Major Road
- Streets
- Counties

MAP INFORMATION

NOTES

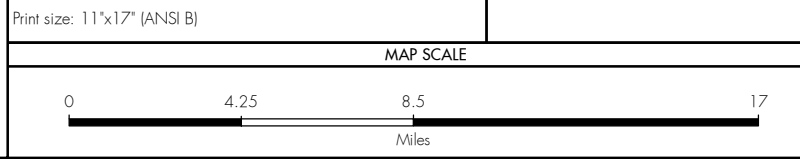
This map has been prepared by Shell from a variety of sources both within Shell and third party information (ESRI, GOM3, and/or IHS). The map may be subject to errors of judgement and/or opinion. Information from third party sources can not be confirmed or guaranteed by Shell. The copyright in this document is vested in Shell 27 Nov 2017. All rights reserved.


Print size: 11"x17" (ANSI B)

GEODETTIC PARAMETERS

Horizontal Coordinate Reference System
 CRS name (ESRI): WGS 1984 Web Mercator Auxiliary Sphere

Geodetic datum: WGS 1984
 Projection name: Web Mercator Auxiliary
 Horizontal units: Feet





SHELL EXPLORATION AND PRODUCTION COMPANY

UNRESTRICTED

UA Geomatics

APPROVED ROUTE MAP FOR PERMIAN SEA DRAGON SWD (FC-2168)

Texas, United States

Author: H. Knight	Date: 27 Nov 2017
Reviewed By: H. Knight	Map Status: In Review
Name: SeaDragonSWD_2168	