

- ### DETAILED TURN BY TURN DIRECTIONS
- Driving Directions From Pecos:
- 1) From intersection of Cedar St. and I-20 drive north on Hwy. 285 1.9 miles.
  - 2) Turn right onto Hwy 302 drive east 5.4 miles to CR 300.
  - 3) Turn left onto CR300 drive 0.8 miles to CR 407.
  - 4) Turn right onto CR 407 drive 6.7 to Lease Rd. on the right.
  - 5) Turn right and drive 1.1 miles to "T" intersection and turn left, proceed 0.3 miles to next intersection.
  - 6) Turn right and drive 0.3 miles to next Lease Rd. on the left, turn left and drive 0.4 miles to entrance location on the right.

- Driving Directions From Kermit:
- 1) From intersection of Hwy 302 and Hwy 115 in Kermit, drive west 30 miles to CR 300 in Mentone.
  - 2) Turn right onto CR300 drive 0.8 miles to CR 407 turn right.
  - 3) Turn right onto CR 407 drive 6.7 to Lease Rd. on the right.
  - 4) Turn right and drive 1.1 miles to "T" intersection and turn left, proceed 0.3 miles to next intersection.
  - 5) Turn right and drive 0.3 miles to next Lease Rd. on the left, turn left and drive 0.4 miles to entrance location on the right.

#### EMERGENCY NUMBERS

ALL EMERGENCY CALLS (Medical, Fire, etc.) - Dial: 911  
 Shell Field Medic Cell: 337-591-7464 Office: 713-493-0263

LOVING & WINKLER COUNTY  
 Kermit City Police Dept 432-586-2577  
 Winkler County Sheriff 432-586-3461  
 Loving County Sheriff 432-377-2411  
 Winkler/Loving City EMS 432-586-2055  
 Winkler County Memorial Hosp 432-586-8299  
 Office of Emergency Management 432-586-2035  
 AEROCARE (Dispatched by City Police) 877-730-0009

SHELL Permian Logistics (832) 337 - 3374

<http://us.uacontractor.com/permian/index.php>

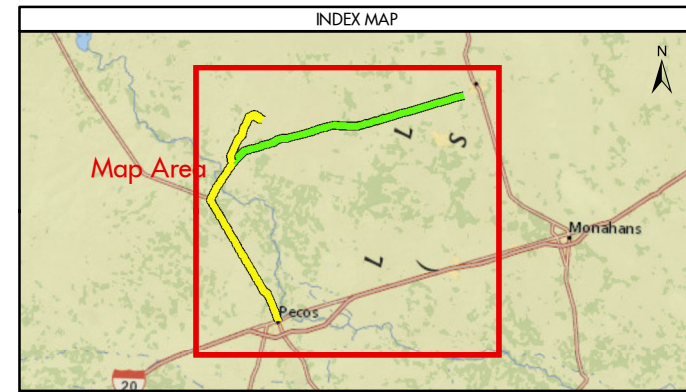
#### SITE DETAILS

Located In: Loving County

Site Latitude & Longitude  
 CRS: WGS 84  
 FORMAT: Decimal Degrees  
 Latitude: 31.784881  
 Longitude: -103.539

Alias(s) Or Other Common Names:

**Wells On Pad Site:**  
**TXL AID CTB**



MAP INFORMATION	
	From Pecos
	From Kermit
	Towns
	Limited Access
	Highway
	Major Road
	Streets
	Counties

NOTES	GEODETIC PARAMETERS
This map has been prepared by Shell from a variety of sources both within Shell and third party information (ESRI, GOM3, and/or IHS). The map may be subject to errors of judgement and/or opinion. Information from third party sources can not be confirmed or guaranteed by Shell. The copyright in this document is vested in Shell 28 Nov 2017. All rights reserved.	Horizontal Coordinate Reference System CRS name (ESRI): WGS 1984 Web Mercator Auxiliary Sphere  Geodetic datum: WGS 1984 Projection name: Web Mercator Auxiliary Horizontal units: Feet
Print size: 11"x17" (ANSI B)	
MAP SCALE	

## SHELL EXPLORATION AND PRODUCTION COMPANY

UNRESTRICTED

UA Geomatics

### APPROVED ROUTE MAP FOR PERMIAN TXL AID CTB (FC-2112)

Texas, United States

Author: H. Knight	Date: 28 Nov 2017
Reviewed By: H. Knight	Map Status: In Review
Name: TXL_AID_CTB_2112	