

- ### DETAILED TURN BY TURN DIRECTIONS
- Driving Directions From Kermit:
- 1) From intersection of Hwy. 302 and Poplar St. (Hwy. 18) drive west 17.9 miles to Anderson Lease Rd. #7 on the left.
 - 2) Turn left onto Anderson Lease Rd. #7 drive 5.7 miles to Lease Rd. intersection.
 - 3) Turn right onto Lease Rd., drive 4.9 miles to Lease Rd. entrance on the left just before the "Y" intersection.
 - 4) Turn left drive 0.1 mile to road split. Bear to the left and continue to drive 1.1 miles to entrance location on the right.
 - 5) Turn right at entrance and drive 1 mile to location on the right.
- Driving Directions From Pecos:
- 1) From intersection of Cedar St. and I-20 drive north on Hwy. 285 19 miles.
 - 2) Turn right onto Hwy 302 drive east 19.4 miles to Anderson Ranch Rd. #7 on the right.
 - 3) Turn right onto Anderson Ranch Rd. #7 drive 5.7 miles to Lease Rd. intersection.
 - 4) Turn right onto Lease Rd., drive 4.9 miles to Lease Rd. entrance on the left just before the "Y" intersection.
 - 5) Turn left drive 0.1 mile to road split. Bear to the left and continue to drive 1.1 miles to entrance location on the right.
 - 6) Turn right at entrance and drive 1 mile to location on the right.

EMERGENCY NUMBERS

ALL EMERGENCY CALLS (Medical, Fire, etc.) - Dial: 911
 Shell Field Medic Cell: 337-591-7464 Office: 713-493-0263

LOVING & WINKLER COUNTY
 Kermit City Police Dept 432-586-2577
 Winkler County Sheriff 432-586-3461
 Loving County Sheriff 432-377-2411
 Winkler/Loving City EMS 432-586-2055
 Winkler County Memorial Hosp 432-586-8299
 Office of Emergency Management 432-586-2035
 AEROCARE (Dispatched by City Police) 877-730-0009

<http://us.uacontractor.com/permian/index.php>

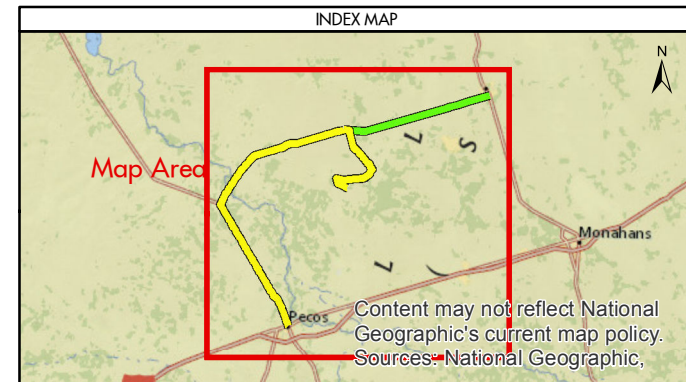
SITE DETAILS

Located In: Loving County

Site Latitude & Longitude
 CRS: WGS 84
 FORMAT: Decimal Degrees
 Latitude: 31.672715
 Longitude: -103.379076

Alias(s) Or Other Common Names:

HSSE Team Lead: Charles Travis 318-332-6023
 HSSE Admin: Idalia Villegas 432-202-8018



- #### MAP INFORMATION
- From Pecos
 - From Kermit
 - ★ Towns
 - Limited Access
 - Highway
 - Major Road
 - Streets
 - Counties
- Content may not reflect National Geographic's current map policy.
 Sources: National Geographic.

NOTES

This map has been prepared by Shell from a variety of sources both within Shell and third party information (ESRI, GOM3, and/or IHS). The map may be subject to errors of judgement and/or opinion. Information from third party sources can not be confirmed or guaranteed by Shell. The copyright in this document is vested in Shell 24 Jul 2015. All rights reserved.

Print size: 11"x17" (ANSI B)

MAP SCALE

SHELL EXPLORATION AND PRODUCTION COMPANY

UNRESTRICTED

UA Geomatics

APPROVED ROUTE MAP FOR PERMIAN UNIVERSITY 19-22 SWD (FC-2189)

Texas, United States

Author: H. Knight	Date: 24 Jul 2015
Reviewed By: H. Knight	Map Status: In Review
Name: University_19-22-SWD_2189	