

DETAILED TURN BY TURN DIRECTIONS

Driving Directions From Kermit:

- 1) From intersection of Hwy. 302 and Hwy. 115 drive south 22 miles to Hwy. 2355 in Pyote.
- 2) Turn right onto Hwy. 2355 and drive 9.7 miles to Lease Rd. on the right.
- 3) Turn right onto Lease Rd. and drive 4 miles north to Lease Rd. on the left.
- 4) Turn left onto Lease Rd. and drive 0.5 miles to "Y", stay to the right.
- 5) Continue 0.5 miles to location site.

Driving Directions From Pecos:

- 1) From intersection of Hwy. 285 and I-20 drive east 20 miles to Barstow.
- 2) Turn left onto Hwy 516 and drive through Barstow 2.8 miles to Hwy. 2355.
- 3) Turn right onto Hwy. 2355 and drive 12 miles to Lease Rd. on the left.
- 4) Turn left onto Lease Rd. and drive 4 miles north to Lease Rd. on the left.
- 5) Turn left onto Lease Rd. and drive 0.5 miles to "Y", stay to the right.
- 6) Continue 0.5 miles to location site.

EMERGENCY NUMBERS

ALL EMERGENCY CALLS (Medical, Fire, etc.) - Dial: 911
 Shell Field Medic Cell: 337-591-7464 Office: 7713-821-8299

WARD & REEVES COUNTY
 Monahan's City Police Dept 432-943-3254
 Ward County Sheriff Dept 432-943-6703
 Monahan's Fire Dept 432-943-2211
 Sheriff's Office 432-943-6703
 Ward County Memorial Hospital 432-943-2511
 Pecos City Police 432-445-4911
 Reeves County Sheriff's Dept 432-445-4901
 Volunteer Fire Dept (Dispatched by City Police)
 Pecos Hospital 432-447-3551
 Office of Emergency Management 432-445-5418
<http://us.uacontractor.com/permian/index.php>

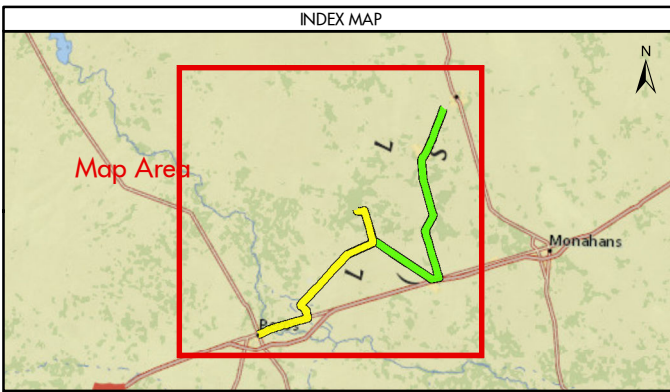
SITE DETAILS

Located In: Ward County

Site Latitude & Longitude
 CRS: WGS 84
 FORMAT: Decimal Degrees
 Latitude: 31.651914
 Longitude: -103.296639

Alias(s) Or Other Common Names:
 SHELL Permian Logistics - (832) 337 - 3374

Wells On Pad Site:
University 20-46 WNK E 1HN



MAP INFORMATION

- From Pecos
- From Kermit
- ★ Towns
- Limited Access
- Highway
- Major Road
- Streets
- Counties

NOTES	GEODETIC PARAMETERS
This map has been prepared by Shell from a variety of sources both within Shell and third party information (ESRI, GOM3, and/or IHS). The map may be subject to errors of judgement and/or opinion. Information from third party sources can not be confirmed or guaranteed by Shell. The copyright in this document is vested in Shell 21 Nov 2017. All rights reserved.	Horizontal Coordinate Reference System CRS name (ESRI): WGS 1984 Web Mercator Auxiliary Sphere Geodetic datum: WGS 1984 Projection name: Web Mercator Auxiliary Horizontal units: Feet
Print size: 11"x17" (ANSI B)	
MAP SCALE	

SHELL EXPLORATION AND PRODUCTION COMPANY

UNRESTRICTED

UA Geomatics

APPROVED ROUTE MAP FOR PERMIAN UNIVERSITY 20 TG UNIT 4602H (FC-2069)

Texas, United States

Author: H. Knight	Date: 21 Nov 2017
Reviewed By: H. Knight	Map Status: In Review
Name: University_20_TG_Unit_4602H_2069	