

**DETAILED TURN BY TURN DIRECTIONS**

Driving Directions From Kermit:

- 1) From intersection of Hwy. 302 and Poplar St. (Hwy. 18) drive west 17.9 miles to A-3 Lease Rd. on the left.
- 2) Turn left onto A-3 Lease Rd. drive 4.6 miles to Lease Rd. intersection on the left.
- 3) Turn left onto Lease Rd. and drive 0.5 miles to location.

Driving Directions From Pecos:

- 1) From intersection of Cedar St. and I-20 drive north on Hwy. 285 19 miles.
- 2) Turn right onto Hwy 302 drive east 19.4 miles to A-3 Lease Rd. on the right.
- 3) Turn right onto A-3 Lease Rd. drive 4.6 miles to Lease Rd. intersection on the left.
- 4) Turn left onto Lease Rd. and drive 0.5 miles to location.

**EMERGENCY NUMBERS**

ALL EMERGENCY CALLS (Medical, Fire, etc.) - Dial: 911  
 Shell Field Medic Cell: 337-591-7464 Office: 713-493-0263

LOVING & WINKLER COUNTY  
 Kermit City Police Dept 432-586-2577  
 Winkler County Sheriff 432-586-3461  
 Loving County Sheriff 432-377-2411  
 Winkler/Loving City EMS 432-586-2055  
 Winkler County Memorial Hosp 432-586-8299  
 Office of Emergency Management 432-586-2035  
 AEROCARE (Dispatched by City Police) 877-730-0009

SHELL Permian Logistics - (832) 337 - 3374

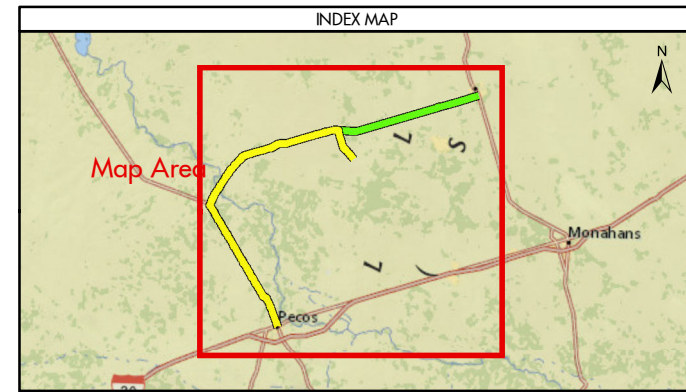
<http://us.uacontractor.com/permian/index.php>

**SITE DETAILS**

Located In: Winkler County

Site Latitude & Longitude  
 CRS: WGS 84  
 FORMAT: Decimal Degrees  
 Latitude: 31.72936  
 Longitude: -103.33312

Alias(s) Or Other Common Names:  
**Wells On Pad Site:**  
**University 20-4 LOV 3H**



MAP INFORMATION	
	From Pecos
	From Kermit
	Limited Access
	Highway
	Major Road
	Streets
	Counties

NOTES	GEODETIC PARAMETERS
This map has been prepared by Shell from a variety of sources both within Shell and third party information (ESRI, GOM3, and/or IHS). The map may be subject to errors of judgement and/or opinion. Information from third party sources can not be confirmed or guaranteed by Shell. The copyright in this document is vested in Shell 21 Nov 2017. All rights reserved.	Horizontal Coordinate Reference System CRS name (ESRI): WGS 1984 Web Mercator Auxiliary Sphere  Geodetic datum: WGS 1984 Projection name: Web Mercator Auxiliary Horizontal units: Feet
Print size: 11"x17" (ANSI B)	
MAP SCALE	

<b>SHELL EXPLORATION AND PRODUCTION COMPANY</b>	
<b>UNRESTRICTED</b>	
UA Geomatics	
<b>APPROVED ROUTE MAP FOR PERMIAN UNIVERSITY 20 PW UNIT 0403H (FC-2199)</b>	
<b>Texas, United States</b>	
Author: H. Knight	Date: 21 Nov 2017
Reviewed By: H. Knight	Map Status: In Review
Name: University_20_PW_Unit_0403H_2199	