

DETAILED TURN BY TURN DIRECTIONS

Driving Directions From Pecos:

- 1) From intersection of I-20 and Hwy 285 in Pecos, take I-20 Business East towards Barstow 6.4 miles.
- 2) Turn left onto Hwy 516 and travel 3.9 miles to County Road 149.
- 3) Turn right onto CR 149 drive 6.6 miles to entrance location on the left.

Driving Directions From Kermit:

- 1) From intersection of Hwy 302 and Hwy 115 in Kermit, drive 29.8 miles to CR 200.
- 2) Turn left onto CR 200 and drive 14.2 miles then turn left.
- 3) Turn left again onto CR 162 and drive 2.8 miles then turn right, drive 0.2 miles and enter location site on the left.

EMERGENCY NUMBERS

ALL EMERGENCY CALLS (Medical, Fire, etc.) - Dial: 911
 Shell Field Medic Cell: 337-591-7464 Office: 713-821-8299

WARD & REEVES COUNTY
 Monahan's City Police Dept 432-943-3254
 Ward County Sheriff's Dept 432-943-6703
 Monahan's Fire Dept 432-943-2211
 Sheriff's Office 432-943-6703
 Ward County Memorial Hospital 432-943-2511
 Pecos City Police 432-445-4911
 Reeves County Sheriff's Dept 432-445-4901
 Volunteer Fire Dept (Dispatched by City Police)
 Pecos Hospital 432-447-3551
 Office of Emergency Management 432-445-5418
<http://us.uacontractor.com/permian/index.php>

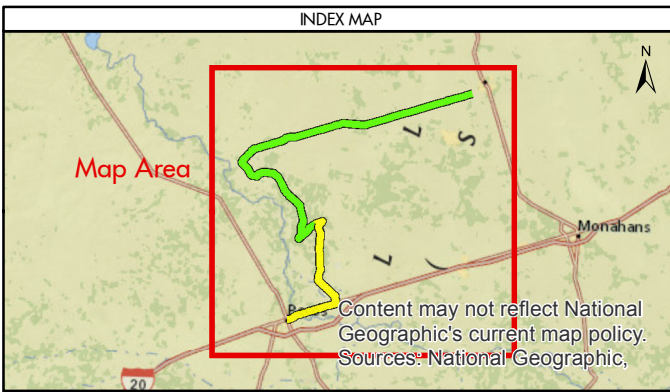
SITE DETAILS

Located In: Ward County

Site Latitude & Longitude
 CRS: WGS 84
 FORMAT: Decimal Degrees
 Latitude: 31.597471
 Longitude: -103.436729

SHELL Permian Logistics (832) 337 - 3374

Wells On Pad Site:
Monroe West 1-17 WRD 2H



MAP INFORMATION	
	From Pecos
	From Kermit
	Towns
	Limited Access
	Highway
	Major Road
	Streets
	Counties

NOTES	GEODETIC PARAMETERS
This map has been prepared by Shell from a variety of sources both within Shell and third party information (ESRI, GOM3, and/or IHS). The map may be subject to errors of judgement and/or opinion. Information from third party sources can not be confirmed or guaranteed by Shell. The copyright in this document is vested in Shell 09 Aug 2017. All rights reserved.	Horizontal Coordinate Reference System CRS name (ESRI): WGS 1984 Web Mercator Auxiliary Sphere Geodetic datum: WGS 1984 Projection name: Web Mercator Auxiliary Horizontal units: Feet
Print size: 11"x17" (ANSI B)	
MAP SCALE	

SHELL EXPLORATION AND PRODUCTION COMPANY	
UNRESTRICTED	
UA Geomatics	
APPROVED ROUTE MAP FOR PERMIAN MONROE WEST 1-17 WRD 2H (FC-1030)	
Texas, United States	
Author: H. Knight	Date: 09 Aug 2017
Reviewed By: H. Knight	Map Status: In Review
Name: MonroeWest_1-17WRD_2H_1030	