

DETAILED TURN BY TURN DIRECTIONS

Driving Directions From Pecos:

- 1) From intersection of Cedar St. and I-20 drive north on Hwy. 285 19 miles.
- 2) Turn right onto Hwy 302 drive east 5.4 miles to CR 300.
- 3) Turn left onto CR300 drive 0.8 miles to CR 407.
- 4) Turn right onto CR 407 drive 7.3 miles to Lease Rd. on the right.
- 5) Turn right onto Lease Rd. drive 1.1 miles to location site.

Driving Directions From Kermit:

- 1) From intersection of Hwy 302 and Hwy 115 in Kermit, drive west 30 miles to CR 300 in Mentone.
- 2) Turn right onto CR300 drive 0.8 miles to CR 407 turn right.
- 3) Turn right onto CR 407 drive 7.3 miles to Lease Rd. on the right.
- 4) Turn right onto Lease Rd. drive 1.1 miles to locatioin site.

EMERGENCY NUMBERS

ALL EMERGENCY CALLS (Medical, Fire, etc.) - Dial: 911
 Shell Field Medic Cell: 337-591-7464 Office: 713-493-0263

LOVING & WINKLER COUNTY
 Kermit City Police Dept 432-586-2577
 Winkler County Sheriff 432-586-3461
 Loving County Sheriff 432-377-2411
 Winkler/Loving City EMS 432-586-2055
 Winkler County Memorial Hosp 432-586-8299
 Office of Emergency Management 432-586-2035
 AEROCARE (Dispatched by City Police) 877-730-0009

SHELL Permian Logistics (832) 337 - 3374

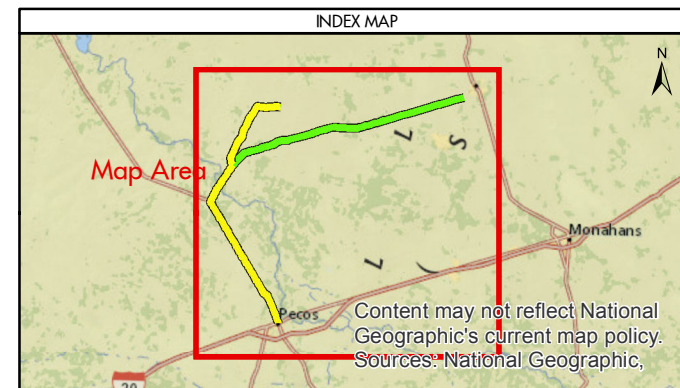
<http://us.uacontractor.com/permian/index.php>

SITE DETAILS

Located In: Loving County

Site Latitude & Longitude
 CRS: WGS 84
 FORMAT: Decimal Degrees
 Latitude: 31.810976
 Longitude: -103.500604

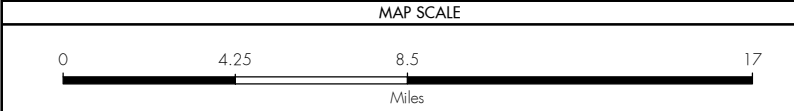
Wells On Pad Site:
Stingray 53-2-25 LOV Unit 1H - 4H



MAP INFORMATION	
	From Pecos
	From Kermit
	Towns
	Limited Access
	Highway
	Major Road
	Streets
	Counties

NOTES
This map has been prepared by Shell from a variety of sources both within Shell and third party information (ESRI, GOM3, and/or IHS). The map may be subject to errors of judgement and/or opinion. Information from third party sources can not be confirmed or guaranteed by Shell. The copyright in this document is vested in Shell 29 Jun 2017. All rights reserved.
Print size: 11"x17" (ANSI B)

GEODETIC PARAMETERS
Horizontal Coordinate Reference System CRS name (ESRI): WGS 1984 Web Mercator Auxiliary Sphere
Geodetic datum: WGS 1984 Projection name: Web Mercator Auxiliary Horizontal units: Feet



SHELL EXPLORATION AND PRODUCTION COMPANY	
UNRESTRICTED	
UA Geomatics	
APPROVED ROUTE MAP FOR PERMIAN TPLT-53T2-25-P4 (FC-4030)	
Texas, United States	
Author: H. Knight	Date: 29 Jun 2017
Reviewed By: H. Knight	Map Status: In Review
Name: TPLT-53T2-25-P4_4030	