

DETAILED TURN BY TURN DIRECTIONS

Driving Directions From Pecos:

- 1) From intersection of Cedar St. and I-20 drive north on Hwy. 285 19 miles.
- 2) Turn right onto Hwy 302 drive east 5.4 miles to CR300.
- 3) Turn left onto CR300 drive 8.8 miles to split, bear to the right.
- 4) Drive 1.9 miles to location entrance on the right.

Driving Directions From Kermit:

- 1) From intersection of Hwy 302 and Hwy 115 in Kermit, drive west 30 miles to CR 300 in Mentone.
- 2) Turn right onto CR300 drive 8.8 miles to split, bear to the right.
- 3) Drive 1.9 miles to location entrance on the right.

EMERGENCY NUMBERS

ALL EMERGENCY CALLS (Medical, Fire, etc.) - Dial: 911
 Shell Field Medic Cell: 337-591-7464 Office: 713-493-0263

LOVING & WINKLER COUNTY
 Kermit City Police Dept 432-586-2577
 Winkler County Sheriff 432-586-3461
 Loving County Sheriff 432-377-2411
 Winkler/Loving City EMS 432-586-2055
 Winkler County Memorial Hosp 432-586-8299
 Office of Emergency Management 432-586-2035
 AEROCARE (Dispatched by City Police) 877-730-0009

SHELL Permian Logistics (832) 337 - 3374

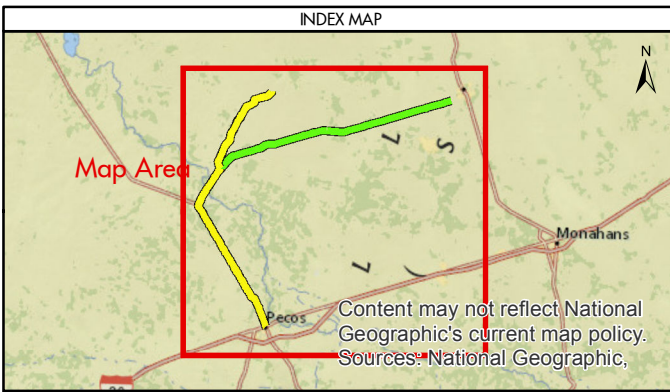
<http://us.uacontractor.com/permian/index.php>

SITE DETAILS

Located In: Loving County

Site Latitude & Longitude
 CRS: WGS 84
 FORMAT: Decimal Degrees
 Latitude: 31.846609
 Longitude: -103.493341

Wells On Pad Site:
Beacon SF 15470 LOV Unit 1H-3H



MAP INFORMATION	
	From Pecos
	From Kermit
	Towns
	Limited Access
	Highway
	Major Road
	Streets
	Counties

NOTES	GEODETIC PARAMETERS
This map has been prepared by Shell from a variety of sources both within Shell and third party information (ESRI, GOM3, and/or IHS). The map may be subject to errors of judgement and/or opinion. Information from third party sources can not be confirmed or guaranteed by Shell. The copyright in this document is vested in Shell 29 Jun 2017. All rights reserved.	Horizontal Coordinate Reference System CRS name (ESRI): WGS 1984 Web Mercator Auxiliary Sphere Geodetic datum: WGS 1984 Projection name: Web Mercator Auxiliary Horizontal units: Feet
Print size: 11"x17" (ANSI B)	
MAP SCALE	

SHELL EXPLORATION AND PRODUCTION COMPANY	
UNRESTRICTED	
UA Geomatics	
APPROVED ROUTE MAP FOR PERMIAN TPLT-SF-15470-P4 (FC-4016)	
Texas, United States	
Author: H. Knight	Date: 29 Jun 2017
Reviewed By: H. Knight	Map Status: In Review
Name: TPLT-SF-15470-P4_4016	