

- ### DETAILED TURN BY TURN DIRECTIONS
- Driving Directions From Kermit:
- 1) From intersection of Hwy. 302 and Hwy. 115 drive south 22.4 miles to FM 2355.
 - 2) Turn right onto FM 2355 and drive 22 miles to FM 516.
 - 3) Turn right onto FM 516 and drive 1.9 miles to CR 149.
 - 4) Turn right onto FM 149 and drive 8.3 miles to (Old Frac Pond on Left).
 - 5) Turn left at (Old Frac Pond) and drive 1.2 miles to the next access road.
 - 6) Turn right and drive 1.3 miles and stay to the right at the "Y", drive 0.9 miles to Old Wright East 1-22.
 - 7) Continue through site location to access road on the right.

- Driving Directions From Pecos:
- 1) From intersection of US 285 and FM 1216, drive east 3.2 miles to FM 3398.
 - 2) Turn right onto FM 3398 and continue 3.4 miles to FM 516, turn right and drive 1.8 miles to CR 149.
 - 3) Turn left onto FM 149 and drive 8.3 miles to (Old Frac Pond on Left).
 - 4) Turn left at (Old Frac Pond) and drive 1.2 miles to the next access road.
 - 5) Turn right and drive 1.3 miles and stay to the right at the "Y", drive 0.9 miles to Old Wright East 1-22.
 - 6) Continue through site location to access road on the right.

EMERGENCY NUMBERS

ALL EMERGENCY CALLS (Medical, Fire, etc.) - Dial: 911
 OHSI Mentone Clinic: Emergency: 1-844-449-0911
 Non-Emergency: 1-844-361-7277
 Shell Field Medic: Cell: 337-591-7464 Office: 713-493-0263

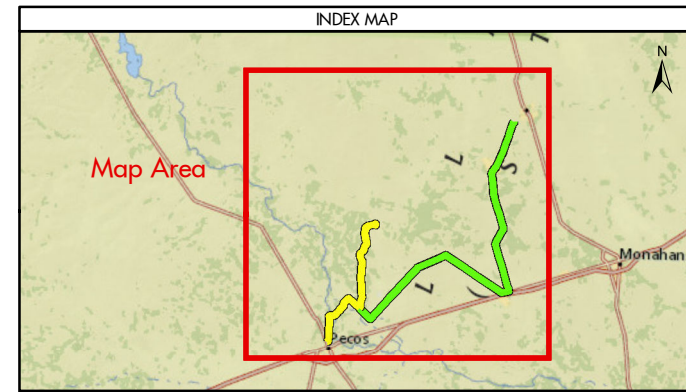
LOVING & WINKLER COUNTY
 Kermit City Police Dept 432-586-2577
 Winkler County Sheriff 432-586-3461
 Loving County Sheriff 432-377-2411
 Winkler/Loving City EMS 432-586-2055
 Winkler County Memorial Hosp 432-586-8299
 Office of Emergency Management 432-586-2035
 AEROCARE (Dispatched by City Police) 877-730-0009
 SHELL Permian Logistics (832) 337 - 3374
<http://us.uacontractor.com/permian/index.php>

SITE DETAILS

Located In: Loving County

Site Latitude & Longitude
 CRS: WGS 84
 FORMAT: Decimal Degrees
 Latitude: 31.647311
 Longitude: -103.405188

Alias(s) Or Other Common Names:
**Wells On Pad Site:
 Wright 1-22 WRD E & W Unit 2H**



- #### MAP INFORMATION
- From Pecos
 - From Kermit
 - ★ Towns
 - Limited Access
 - Highway
 - Major Road
 - Streets
 - Counties

NOTES

This map has been prepared by Shell from a variety of sources both within Shell and third party information (ESRI, GOM3, and/or IHS). The map may be subject to errors of judgement and/or opinion. Information from third party sources can not be confirmed or guaranteed by Shell. The copyright in this document is vested in Shell 11 Oct 2017. All rights reserved.

Print size: 11"x17" (ANSI B)

MAP SCALE

SHELL EXPLORATION AND PRODUCTION COMPANY

UNRESTRICTED

UA Geomatics

APPROVED ROUTE MAP FOR PERMIAN CCR-1-22-P1 (FC-4045)

Texas, United States

Author: H. Knight	Date: 11 Oct 2017
Reviewed By: H. Knight	Map Status: In Review
Name: CCR-1-22-P1_4045	

GEODETTIC PARAMETERS

Horizontal Coordinate Reference System
 CRS name (ESRI): WGS 1984 Web Mercator Auxiliary Sphere

Geodetic datum: WGS 1984
 Projection name: Web Mercator Auxiliary
 Horizontal units: Feet