

DETAILED TURN BY TURN DIRECTIONS

- Driving Directions From Pecos:
- 1) From intersection of Cedar St. and I-20 drive north on Hwy. 285 19 miles.
 - 2) Turn right onto Hwy 302 drive east 5.4 miles to CR300.
 - 3) Turn left onto CR300 drive 0.9 miles to CR 407 turn right.
 - 4) Turn right onto CR 407 drive 12.8 miles to Lease Rd. on the left.
 - 5) Turn left onto Lease Rd. and drive 1.5 miles to cattle guard on the right.
 - 6) After cattle guard turn left and drive 0.9 miles to location access road on the left.

- Driving Directions From Kermit:
- 1) From intersection of Hwy 302 and Hwy 115 in Kermit, drive west 30 miles to CR 300 in Mentone.
 - 2) Turn right onto CR300 drive 0.9 miles to CR 407 turn right.
 - 3) Turn right onto CR 407 drive 12.8 miles to Lease Rd. on the left.
 - 4) Turn left onto Lease Rd. and drive 1.5 miles to cattle guard on the right.
 - 5) After cattle guard turn left and drive 0.9 miles to location access road on the left.

EMERGENCY NUMBERS

ALL EMERGENCY CALLS (Medical, Fire, etc.) - Dial: 911
 Shell Field Medic Cell: 337-591-7464 Office: 713-493-0263

LOVING & WINKLER COUNTY
 Kermit City Police Dept 432-586-2577
 Winkler County Sheriff 432-586-3461
 Loving County Sheriff 432-377-2411
 Winkler/Loving City EMS 432-586-2055
 Winkler County Memorial Hosp 432-586-8299
 Office of Emergency Management 432-586-2035
 AEROCARE (Dispatched by City Police) 877-730-0009

SHELL Permian Logistics (832) 337 - 3374

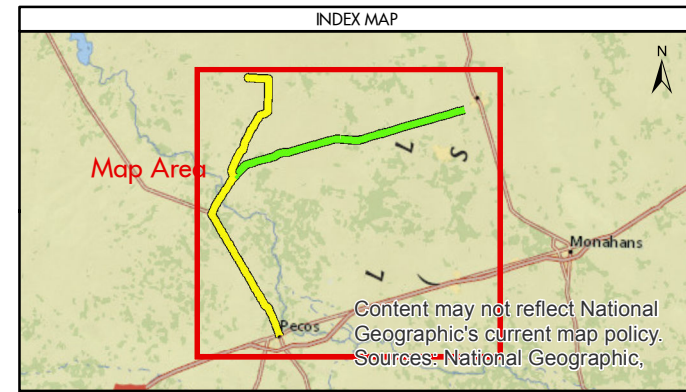
<http://us.uacontractor.com/permian/index.php>

SITE DETAILS

Located In: Loving County

Site Latitude & Longitude
 CRS: WGS 84
 FORMAT: Decimal Degrees
 Latitude: 31.882168
 Longitude: -103.577881

Wells On Pad Site:
Nyala 53-2-5 LOV Unit 7H, 8H, 9H



MAP INFORMATION

- From Pecos
- From Kermit
- Towns
- Limited Access
- Highway
- Major Road
- Streets
- Counties

NOTES

This map has been prepared by Shell from a variety of sources both within Shell and third party information (ESRI, GOM3, and/or IHS). The map may be subject to errors of judgement and/or opinion. Information from third party sources can not be confirmed or guaranteed by Shell. The copyright in this document is vested in Shell 01 Jun 2017. All rights reserved.

Print size: 11"x17" (ANSI B)

MAP SCALE

SHELL EXPLORATION AND PRODUCTION COMPANY

UNRESTRICTED

UA Geomatics

APPROVED ROUTE MAP FOR PERMIAN TPLT-53T21-5-P2 (FC-4053)

Texas, United States

Author: H. Knight Date: 01 Jun 2017
 Reviewed By: H. Knight Map Status: In Review
 Name: TPLT-53T2-5-P2_4053