

DETAILED TURN BY TURN DIRECTIONS

Driving Directions From Pecos:

- 1) From intersection of Cedar St. and I-20 drive north on Hwy. 285 19 miles.
- 2) Turn right onto Hwy 302 drive east 32.5 miles to CR 101 on the left.
- 3) Turn left onto CR 101 drive 7.4 miles then turn left onto Lease Rd.
- 4) Continue on Lease Rd. for 10.9 miles, turn right and drive 1.2 miles.
- 5) Turn right and continue for 0.4 miles to location sie.

Driving Directions From Kermit:

- 1) From intersection of Hwy. 302 and Hwy. 115 drive west 2.9 miles to CR 101 on the right.
- 2) Turn right onto CR 101 and drive 7.4 miles then turn left onto Lease Rd.
- 3) Continue on Lease Rd. for 10.9 miles, turn right and drive 1.2 miles.
- 4) Turn right and continue for 0.4 miles to location sie.

EMERGENCY NUMBERS

ALL EMERGENCY CALLS (Medical, Fire, etc.) - Dial: 911
 Shell Field Medic Cell: 337-591-7464 Office: 713-493-0263

LOVING & WINKLER COUNTY
 Kermit City Police Dept 432-586-2577
 Winkler County Sheriff 432-586-3461
 Loving County Sheriff 432-377-2411
 Winkler/Loving City EMS 432-586-2055
 Winkler County Memorial Hosp 432-586-8299
 Office of Emergency Management 432-586-2035
 AEROCARE (Dispatched by City Police) 877-730-0009

SHELL Permian Logistics (832) 337 - 3374

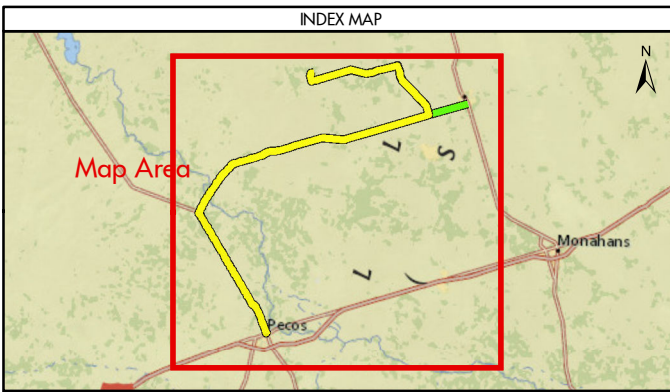
<http://us.uacontractor.com/permian/index.php>

SITE DETAILS

Located In: Loving County

Site Latitude & Longitude
 CRS: WGS 84
 FORMAT: Decimal Degrees
 Latitude: 31.894889
 Longitude: -103.409522

Wells On Pad Site:
Minot 75-8-LOV 1H
Bismark 75-12 LOV 1H



MAP INFORMATION	
	From Pecos
	From Kermit
	Towns
	Limited Access
	Highway
	Major Road
	Streets
	Counties

NOTES	GEODETIC PARAMETERS
This map has been prepared by Shell from a variety of sources both within Shell and third party information (ESRI, GOM3, and/or IHS). The map may be subject to errors of judgement and/or opinion. Information from third party sources can not be confirmed or guaranteed by Shell. The copyright in this document is vested in Shell 27 Feb 2018. All rights reserved.	Horizontal Coordinate Reference System CRS name (ESRI): WGS 1984 Web Mercator Auxiliary Sphere Geodetic datum: WGS 1984 Projection name: Web Mercator Auxiliary Horizontal units: Feet
Print size: 11"x17" (ANSI B)	
MAP SCALE	

SHELL EXPLORATION AND PRODUCTION COMPANY	
UNRESTRICTED	
UA Geomatics	
APPROVED ROUTE MAP FOR PERMIAN DKB-75-11-P1 (FC-4044)	
Texas, United States	
Author: H. Knight	Date: 27 Feb 2018
Reviewed By: H. Knight	Map Status: In Review
Name: DKB-75-11-P1_4044	