

DETAILED TURN BY TURN DIRECTIONS

- Driving Directions From Pecos:
- 1) From intersection of Cedar St. and I-20 drive north on Hwy. 285 19 miles.
 - 2) Turn right onto Hwy 302 drive east 15.3 miles to Lease Rd. on the left.
 - 3) Turn left onto Lease Rd. drive 3.1 miles to Lease Rd. on the left.
 - 4) Turn left onto Lease Rd. and drive 1.1 miles to entrance location on the left.

- Driving Directions From Kermit:
- 1) From intersection of Hwy. 302 and Poplar St. (Hwy. 18) drive west 22 miles to Lease Rd. on the right.
 - 2) Turn right onto Lease Rd. drive 3.1 miles to Lease Rd. on the left.
 - 3) Turn left onto Lease Rd. and drive 1.1 miles to entrance location on the left.

EMERGENCY NUMBERS

ALL EMERGENCY CALLS (Medical, Fire, etc.) - Dial: 911
 Shell Field Medic Cell: 337-591-7464 Office: 713-493-0263

LOVING & WINKLER COUNTY
 Kermit City Police Dept 432-586-2577
 Winkler County Sheriff 432-586-3461
 Loving County Sheriff 432-377-2411
 Winkler/Loving City EMS 432-586-2055
 Winkler County Memorial Hosp 432-586-8299
 Office of Emergency Management 432-586-2035
 AEROCARE (Dispatched by City Police) 877-730-0009

SHELL Permian Logistics (832) 337 - 3374

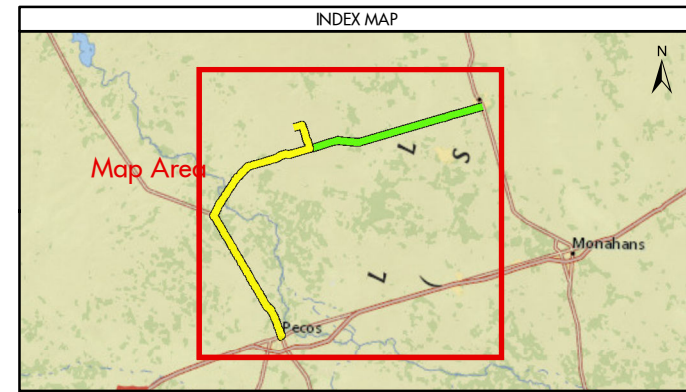
<http://us.uacontractor.com/permian/index.php>

SITE DETAILS

Located In: Loving County

Site Latitude & Longitude
 CRS: WGS 84
 FORMAT: Decimal Degrees
 Latitude: 31.799566
 Longitude: -103.480919

Wells On Pad Site:
Medora 29 LOV Unit 0805 1H



MAP INFORMATION

- From Pecos
- From Kermit
- Towns
- Limited Access
- Highway
- Major Road
- Streets
- Counties

NOTES

This map has been prepared by Shell from a variety of sources both within Shell and third party information (ESRI, GOM3, and/or IHS). The map may be subject to errors of judgement and/or opinion. Information from third party sources can not be confirmed or guaranteed by Shell. The copyright in this document is vested in Shell 06 Mar 2018. All rights reserved.

Print size: 11"x17" (ANSI B)

MAP SCALE

SHELL EXPLORATION AND PRODUCTION COMPANY

UNRESTRICTED

UA Geomatics

APPROVED ROUTE MAP FOR PERMIAN HAR-29-17-P1 (FC-4144)

Texas, United States

Author: H. Knight	Date: 06 Mar 2018
Reviewed By: H. Knight	Map Status: In Review
Name: HAR-29-17-P1_4144	