

DETAILED TURN BY TURN DIRECTIONS

Driving Directions From Pecos:

- 1) From intersection of Cedar St. and I-20 drive north on Hwy. 285 19 miles.
- 2) Turn right onto Hwy 302 drive east 7.2 miles.
- 3) Turn right onto Wheat Lease Rd. proceed 0.7 miles, veer right then left and drive 1.7 miles to "Y".
- 4) At "Y" veer left and drive 1.3 miles to location entrance on the right.

Driving Directions From Kermit:

- 1) From intersection of Hwy 302 and Hwy 115 in Kermit, drive west 26.4 miles to Wheat Ranch Rd. on the left.
- 2) Turn left onto Wheat Ranch Rd. proceed 0.7 miles, veer right then left and drive 1.7 miles to "Y".
- 3) At "Y" veer left and drive 1.3 miles to location entrance on the right

EMERGENCY NUMBERS

ALL EMERGENCY CALLS (Medical, Fire, etc.) - Dial: 911
 Shell Field Medic Cell: 337-591-7464 Office: 713-493-0263

LOVING & WINKLER COUNTY
 Kermit City Police Dept 432-586-2577
 Winkler County Sheriff 432-586-3461
 Loving County Sheriff 432-377-2411
 Winkler/Loving City EMS 432-586-2055
 Winkler County Memorial Hosp 432-586-8299
 Office of Emergency Management 432-586-2035
 AEROCARE (Dispatched by City Police) 877-730-0009

SHELL Permian Logistics (832) 337 - 3374

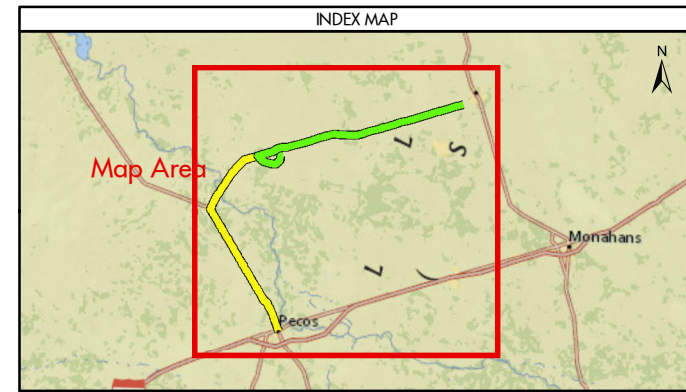
<http://us.uacontractor.com/permian/index.php>

SITE DETAILS

Located In: Loving County

Site Latitude & Longitude
 CRS: WGS 84
 FORMAT: Decimal Degrees
 Latitude: 31.738774
 Longitude: -103.493575

Wells On Pad Site:
WHEAT TRUST C27-4 LOV 2H



MAP INFORMATION	
—	From Kermit
—	From Pecos
★	Towns
—	Limited Access
—	Highway
—	Major Road
—	Streets
	Counties

NOTES	GEODETIC PARAMETERS
This map has been prepared by Shell from a variety of sources both within Shell and third party information (ESRI, GOM3, and/or IHS). The map may be subject to errors of judgement and/or opinion. Information from third party sources can not be confirmed or guaranteed by Shell. The copyright in this document is vested in Shell 19 Sep 2017. All rights reserved.	Horizontal Coordinate Reference System CRS name (ESRI): WGS 1984 Web Mercator Auxiliary Sphere Geodetic datum: WGS 1984 Projection name: Web Mercator Auxiliary Horizontal units: Feet
Print size: 11"x17" (ANSI B)	
MAP SCALE	

SHELL EXPLORATION AND PRODUCTION COMPANY

UNRESTRICTED

UA Geomatics

APPROVED ROUTE MAP FOR PERMIAN WHT-C27-4-P4 (FC-4059)

Texas, United States

Author: H. Knight	Date: 19 Sep 2017
Reviewed By: H. Knight	Map Status: In Review
Name: WHT-C27-4-P4_4059	