

DETAILED TURN BY TURN DIRECTIONS

Driving Directions From Kermit:

- 1) From intersection of Hwy. 302 and Hwy. 15 drive west 15.8 miles to A-3 Lease Rd. on the left.
- 2) Turn left onto A-3 Lease Rd. drive 5.7 miles to Lease Rd. intersection.
- 3) Turn right onto Lease Rd., drive 2.6 miles then turn right and drive 0.1 mile, veer left and drive 3 miles to location on the left.

Driving Directions From Pecos:

- 1) From intersection of Cedar St. and I-20 drive north on Hwy. 285 19 miles.
- 2) Turn right onto Hwy 302 drive east 19.4 miles to A-3 Rd. on the right.
- 3) Turn right onto A-3 Lease Rd. drive 5.7 miles to Lease Rd. intersection.
- 4) Turn right onto Lease Rd., drive 2.6 miles then turn right and drive 0.1 mile, veer left and drive 3 miles to location on the left.

EMERGENCY NUMBERS

ALL EMERGENCY CALLS (Medical, Fire, etc.) - Dial: 911
 Shell Field Medic Cell: 337-591-7464 Office: 713-821-8299

LOVING & WINKLER COUNTY
 Kermit City Police Dept 432-586-2577
 Winkler County Sheriff 432-586-3461
 Loving County Sheriff 432-377-2411
 Winkler/Loving City EMS 432-586-2055
 Winkler County Memorial Hosp 432-586-8299
 Office of Emergency Management 432-586-2035
 AEROCARE (Dispatched by City Police) 877-730-0009

SHELL Permian Logistics - (832) 337 - 3374

<http://us.uacontractor.com/permian/index.php>

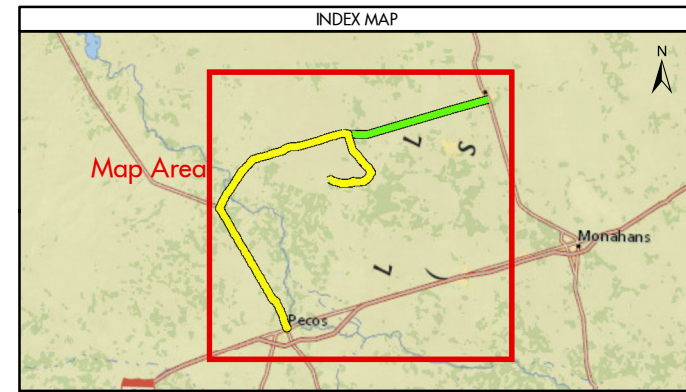
SITE DETAILS

Located In: Loving County

Site Latitude & Longitude
 CRS: WGS 84
 FORMAT: Decimal Degrees
 Latitude: 31.69509
 Longitude: -103.41427

Alias(s) Or Other Common Names:

Wells On Pad Site:
University 20-14 W1H



MAP INFORMATION	
	From Pecos
	From Kermit
	Towns
	Limited Access
	Highway
	Major Road
	Streets
	Counties

NOTES	GEODETIC PARAMETERS
This map has been prepared by Shell from a variety of sources both within Shell and third party information (ESRI, GOM3, and/or IHS). The map may be subject to errors of judgement and/or opinion. Information from third party sources can not be confirmed or guaranteed by Shell. The copyright in this document is vested in Shell 21 Nov 2017. All rights reserved.	Horizontal Coordinate Reference System CRS name (ESRI): WGS 1984 Web Mercator Auxiliary Sphere Geodetic datum: WGS 1984 Projection name: Web Mercator Auxiliary Horizontal units: Feet
Print size: 11"x17" (ANSI B)	
MAP SCALE	

SHELL EXPLORATION AND PRODUCTION COMPANY	
UNRESTRICTED	
UA Geomatics	
APPROVED ROUTE MAP FOR PERMIAN UNIVERSITY 19 TG UNIT 1401W (FC-1055)	
Texas, United States	
Author: H. Knight	Date: 21 Nov 2017
Reviewed By: H. Knight	Map Status: In Review
Name: University_19_TG_Unit_1401W_1055	